

# Potevio

## 中国普天

---

Government of China

COMMUNICATIONS

INDUSTRIAL APPLICATIONS

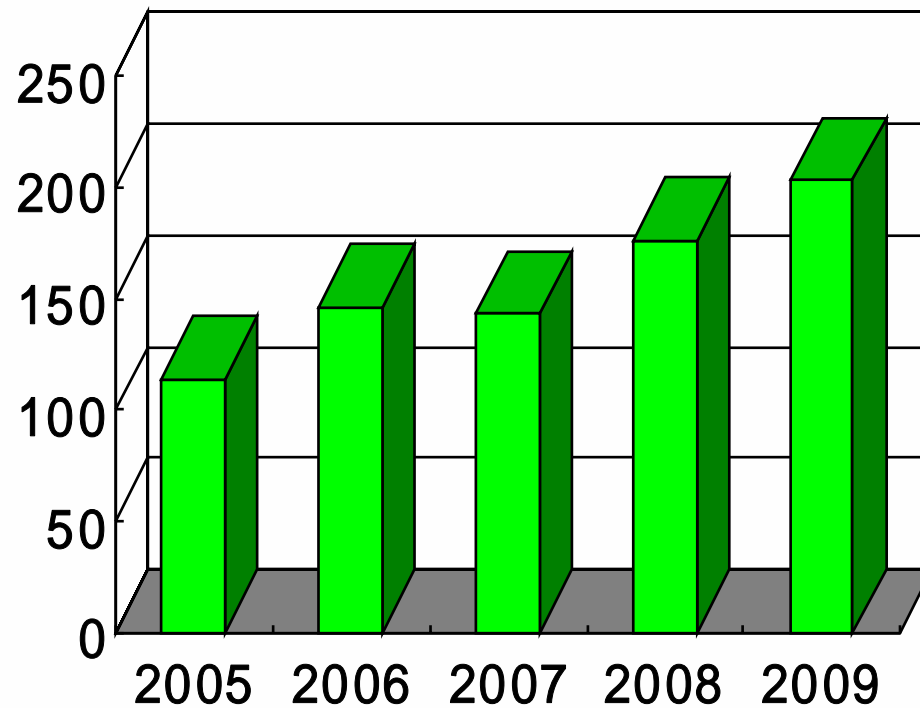
BROADCASTING

[www.potevio-mena.com](http://www.potevio-mena.com)

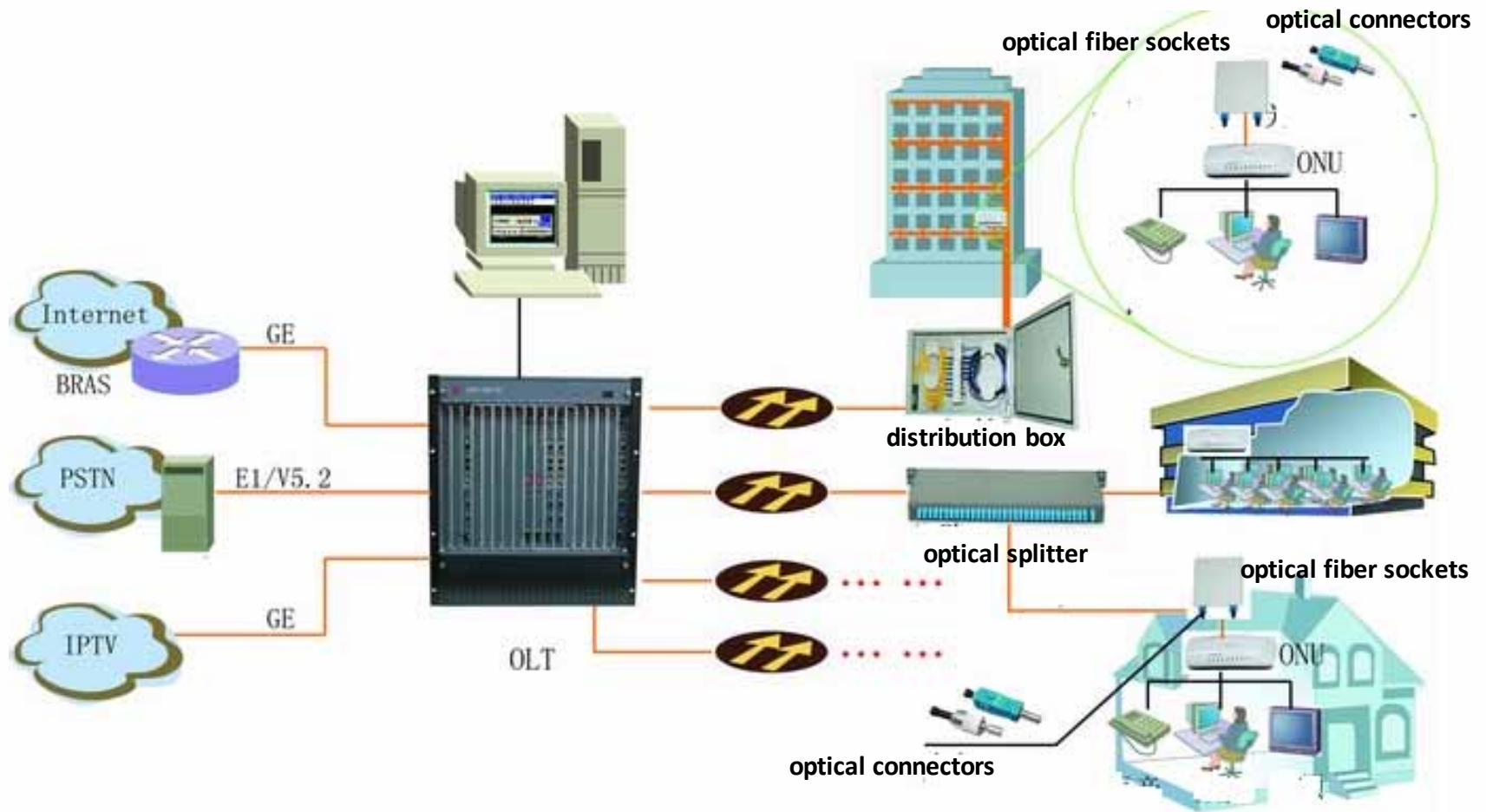
# Product Introduction - FTTH

## Comparative revenue for the Cabling System

■ Cabling System Revenue  
(Unit: million USD)



# FTTH Total Solution



## Management of ONU - FTTB

### CP GCD03A Corridor Multimedia Access Box



Height: 600MM

Width: 700MM

Depth: 140MM

# Management of ONU

## CP GCD03A FTTH Integrated Information Box



Dimensions :

Height × Width × Depth=300 × 350 × 120mm

## CP GCD03C Optical Distribution Box



Dimensions :  
H x W x D=420 x 300 x 130mm

# Management of Splitter

## ODF Management



2 x 32 optical splitter tray





**12-core integration tray**



**2 x 16 optical splitter tray**

| Dimensions       | Capacity                     |
|------------------|------------------------------|
| 2600 x 840 x 300 | 864/1728 core(24-core tray ) |
| 2200 x 840 x 300 | 720/1440 core(24-core tray ) |
| 2000 x 840 x 300 | 648/1296 core(24-core tray ) |



Wire groove can be installed at the back to meet the requirement of wiring at the back of the distribution frame.

## Example of management of splitter optical fiber



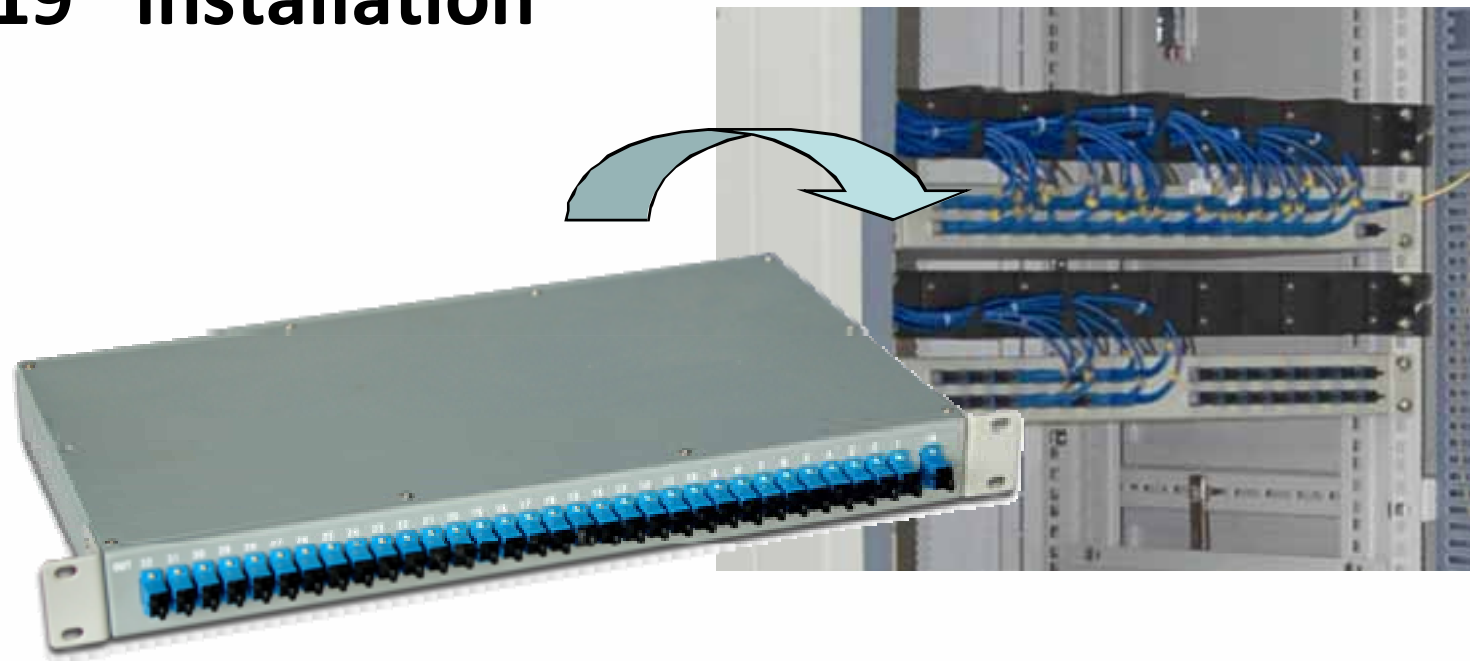
# Management of Splitter

Optical Cross Connection Cabinet



# Management of Splitter

19" installation



# Management of Splitter

Management of wall-hanging boxes

**CP GCD03D optical distribution box**



COMMUNICATIONS

INDUSTRIAL APPLICATIONS

BROADCASTING

[www.potevio-mena.com](http://www.potevio-mena.com)

# Splitter

FBT and PLC Splitter



1 × 4 splitter



1 × 8 splitter



2 × 16 splitter



1 × 32 splitter



WDM

# FTTH Core Coupling Device



FC type optical fiber flexible joint



SC type optical fiber flexible joint



FC type optical fiber swift coupling connector



SC type optical fiber swift coupling connector

## Technical Indexes

|  |            |  |            |
|--|------------|--|------------|
| Diameter of Optical Fiber ( $\mu\text{m}$ )            | 125        | Tension Strength (g)                       | $\geq 500$ |
| Diameter of Painted Protective Layer ( $\mu\text{m}$ ) | 250        | Ambient Temperature ( $^{\circ}\text{C}$ ) | -40 ~ 80   |
| Insert Loss (dB)                                       | $\leq 0.3$ | Wave return loss (dB)                      | $\leq -50$ |

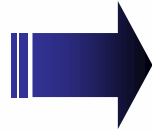
# Plastic Alloy Adapter

---



# Normal Optical Fiber Devices

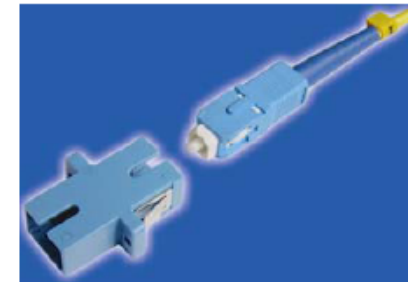
➤ Connector  
Adaptor



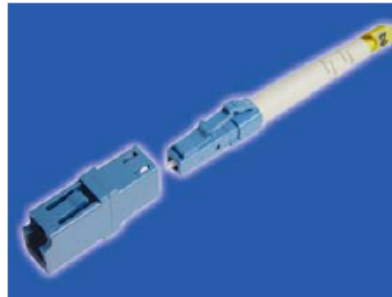
FC type



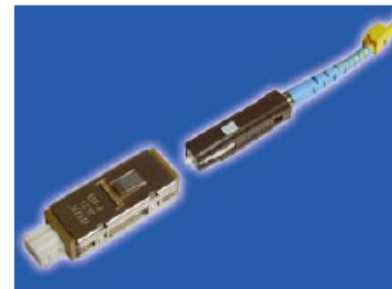
ST type



SC type



LC type



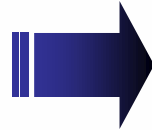
MU type



MTRJ type

# Normal Optical Fiber Devices

➤ Attenuator



Fixed optical attenuator

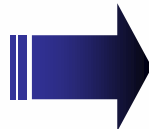


Adjustable optical attenuator



High return loss Adjustable optical attenuator optical attenuator

➤ Division multiplexer



Wavelength division multiplexer

# Normal Optical Fiber Devices

➤ Pigtail cable



Bunchy pigtail cable



Banded pigtail cable



Waterproof pigtail cable

➤ Optical tapping element



PLC type optical tapping element



ΓBT type optical tapping element

# ODF

---

## Main Type:

✓ *GPX67III*

✓ *GPX67IIB*

✓ *GPX67IIIA*

✓ *GPX2000IIIC*

# ODF—GPX67III



The cable way is more clear

Satisfy more than 10 frames integrated, the capacity can achieve above 10000 core

### Guidance for order

| External dimensions (mm)<br>(W × H × D) | Lower cable unit (frame) | Number of tray | Capacity (core) |
|---|--------------------------|----------------|-----------------|
| 2000 × 1080 × 300                       | 2                        | 108            | 1296            |
| 2200 × 1080 × 300                       | 2                        | 120            | 1440            |
| 2600 × 1080 × 300                       | 2                        | 144            | 1728            |

## ODF—GPX67III



Frame backside according customer needs put multilayer dispatching cables and storage frame, It is very convenience.

### Guidance for order

| External dimensions(mm)<br>( W × H × D) | Lower cable unit (frame) | Number of tray | Capacity (core) |
|---|--------------------------|----------------|-----------------|
| 2000 × 1080 × 300                       | 2                        | 108            | 1296            |
| 2200 × 1080 × 300                       | 2                        | 120            | 1440            |
| 2600 × 1080 × 300                       | 2                        | 144            | 1728            |

# ODF—GPX67IIB



Standard Type

Extension Type

## Guidance Order

### Guidance for order

| External dimensions (mm)<br>(W × H × D) | Lower cable unit (frame) | Number of tray | Capacity (core) |
|---|--------------------------|----------------|-----------------|
| 2000 × 600 × 500                        | 9                        | 54             | 432/648(max)    |
| 2200 × 600 × 500                        | 10                       | 60             | 504/720(max)    |
| 2500 × 600 × 500                        | 12                       | 72             | 576/864(max)    |

# ODF—GPX67IIB



12 core integrated tray

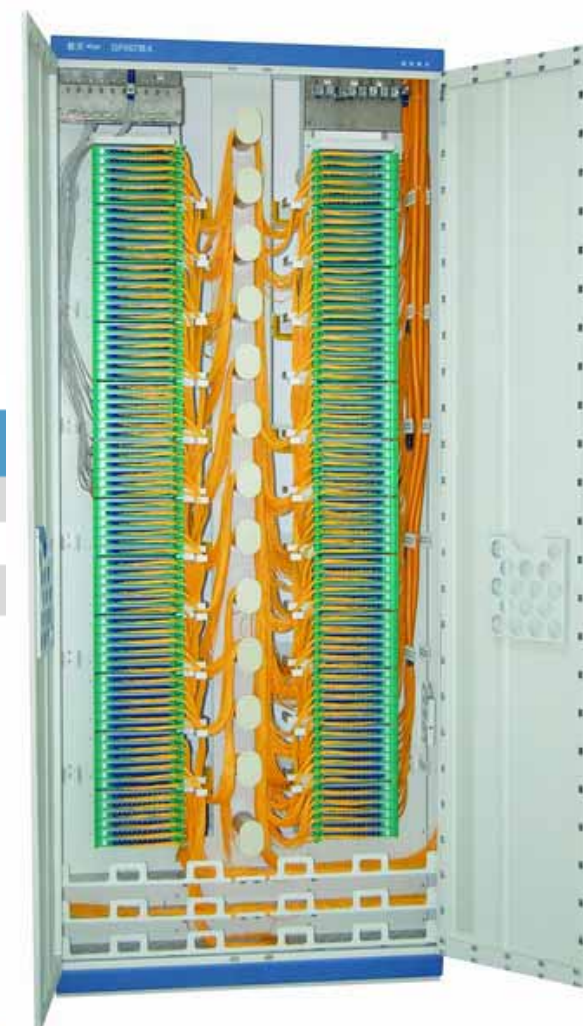


Standard Type

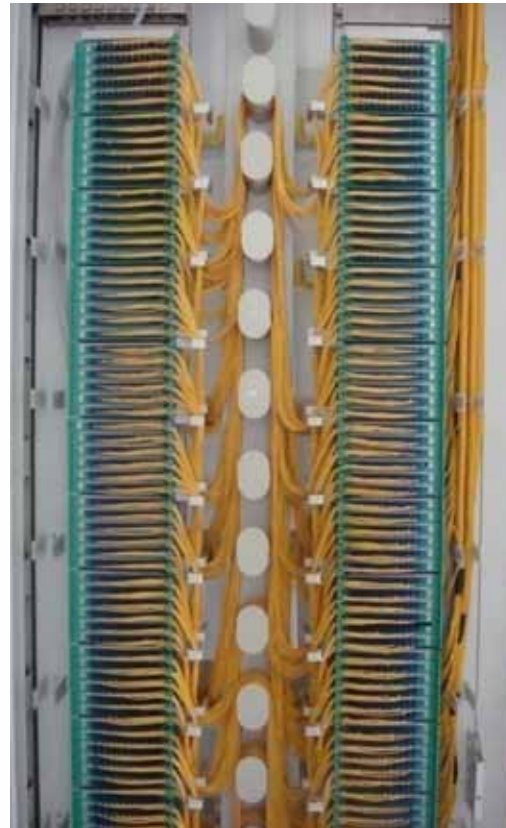
# ODF—GPX67IIIA

## Guidance for order

| External dimensions(mm.)<br>(W × H × D) | Lower cable rail (frame) | Number of tray | Capacity (core) |
|---|--------------------------|----------------|-----------------|
| 2000 × 1060 × 300                       | 2                        | 108            | 1296            |
| 2200 × 1060 × 300                       | 2                        | 120            | 1440            |
| 2600 × 1060 × 300                       | 2                        | 144            | 1728            |



# ODF—GPX67111A



Support management of  
left-right cross connection



Small-sized 12 core  
integrated tray

# ODF—GPX2000IIIC

GPX2000IIIE TYPE OPTICAL  
CABLE INDUCING CABINET

GPX2000IIIC optical fiber frame



Detail of terminal frame



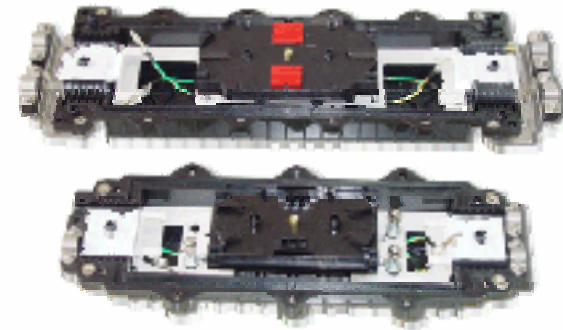
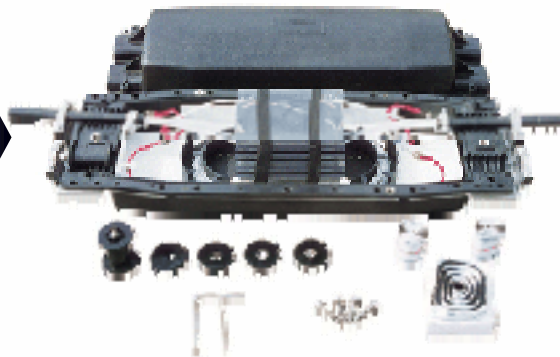
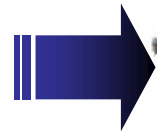
Guidance for order

| GPX 2000 II E (mm)<br>(H × W × D) | Capacity (core) | GPX 2000 III C (mm)<br>(W × H × D) | Capacity (core) |
|-----------------------------------|-----------------|------------------------------------|-----------------|
| 2000 × 840 × 450                  | 1440            | 2000 × 960 × 450                   | 1440            |
| 2200 × 840 × 450                  | 1728            | 2200 × 960 × 450                   | 1864            |
| 2600 × 840 × 450                  | 2160            | 2600 × 960 × 450                   | 1808            |

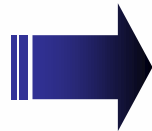
- GPJ05 Fiber Splicing Box
- GP05 OPTIC CABLE TERMINATION CABINET

# GPJ05 Fiber Splicing Box

*horizontal type*



*vertical type*



# GPJ05 Fiber Splicing Box

## *Order Guide (GPJ05)*

| Model | Capacity (port)  |              |
|-------|------------------|--------------|
|       | Non-ribbon Cable | Ribbon Cable |
| GPJ05 | 12               | 24           |
| GPJ05 | 24               | 48           |
| GPJ05 | 48               | 96           |
| GPJ05 | 72               | 144          |
| GPJ05 | 144              | 288          |

# GP05 Optic Cable Termination Cabinet



# GP05 Optic Cable Termination Cabinet

## *Order Guide (GP05)*

| Model  | Capacity ( ports ) | Dimension ( mm ) |     |    |
|--------|--------------------|------------------|-----|----|
|        |                    | H                | W   | D  |
| GP05-A | 12                 | 355              | 160 | 65 |
| GP05-B | 24                 | 355              | 160 | 65 |
| GP05-C | 48                 | 355              | 160 | 65 |

# Optical cable and option



**Optical Fiber Socket**



**12 core**



**48 core**



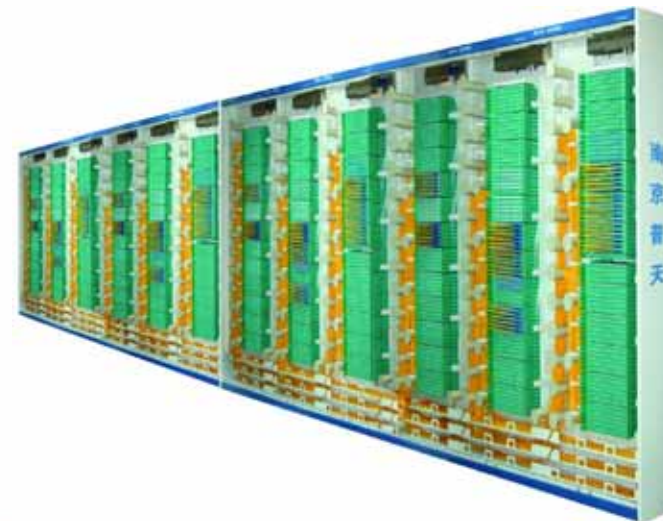
**24 core**

**Optical fiber distribution plate**

## Main Glories

- Jun.,2007, Company main distribution frame business has gained over 100,000,000 lines via internet successfully.
- In the year of 2007, 2008,2009, Top 10 competitive enterprises in optical transmission and network access facility field.
- Jun.,2005, Won the Certificate of High-and New Technology Enterprise.
- Nov.2000, Company distribution frames with PUTIAN brand became the famous brand in China.
- In 1998, Entitled with Name of important High and new Technology Enterprises in China National Torch Plan.

Applications: ODF used in the equipment room of China Mobile, Shanghai

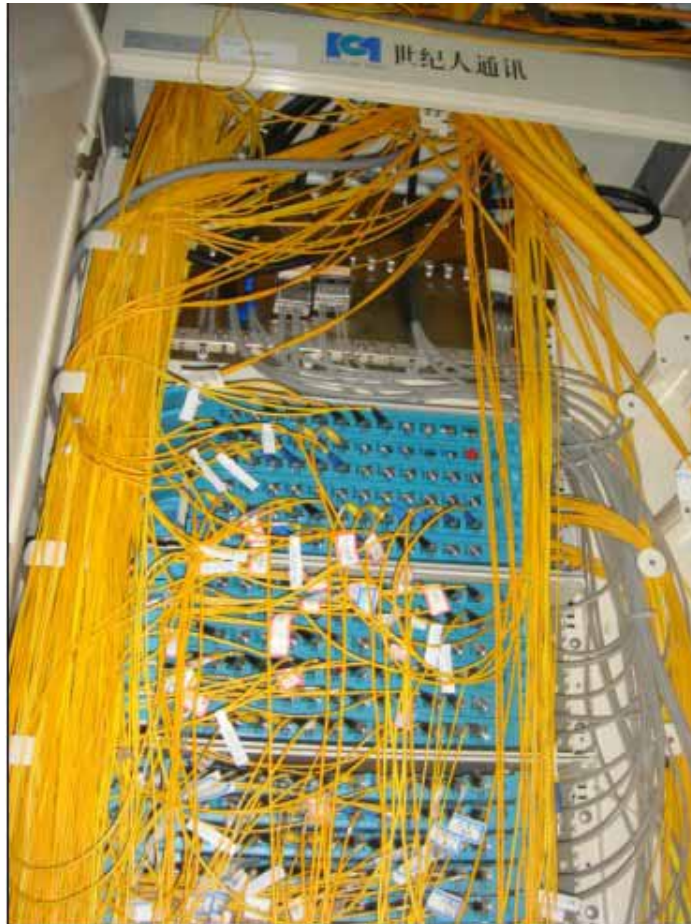


## Applications : Equipment room of China Telecom



As one of the biggest distribution frames supplier in China, ODF widely used in equipment rooms of China Mobile, China Telecom, etc. The sale networks and after-sale services are distributed whole China.

# Comparison



Potevio's ODF

## Main features for Potevio's ODF

**Thank you**